



United Nations
Educational, Scientific and
Cultural Organization



International Centre for
Water Hazard and Risk Management
under the auspices of UNESCO



Public Works Research Institute,
National Research and Development
Agency, Japan



ICHARM's activities on water-related disaster and flood management in Asia (Cases of Philippines, Myanmar and Sri Lanka)

Tetsuya IKEDA, PhD

Chief Researcher

ICHARM

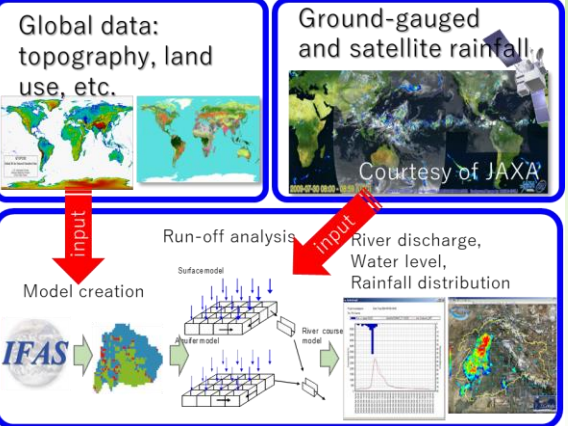
**(International Centre for Water Hazard and Risk Management
under the auspices of UNESCO)**

28 August 2018

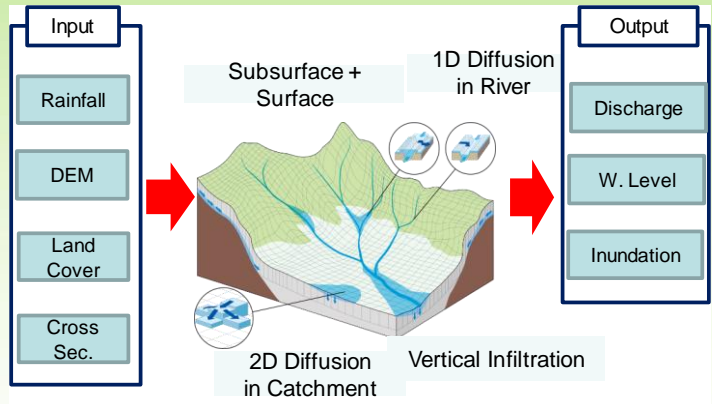
**ASIA FOCUS – Water Sensitive & Livable Green Cities in Asia
Stockholm World Water Week**



Three Pillars of ICHARM Activities

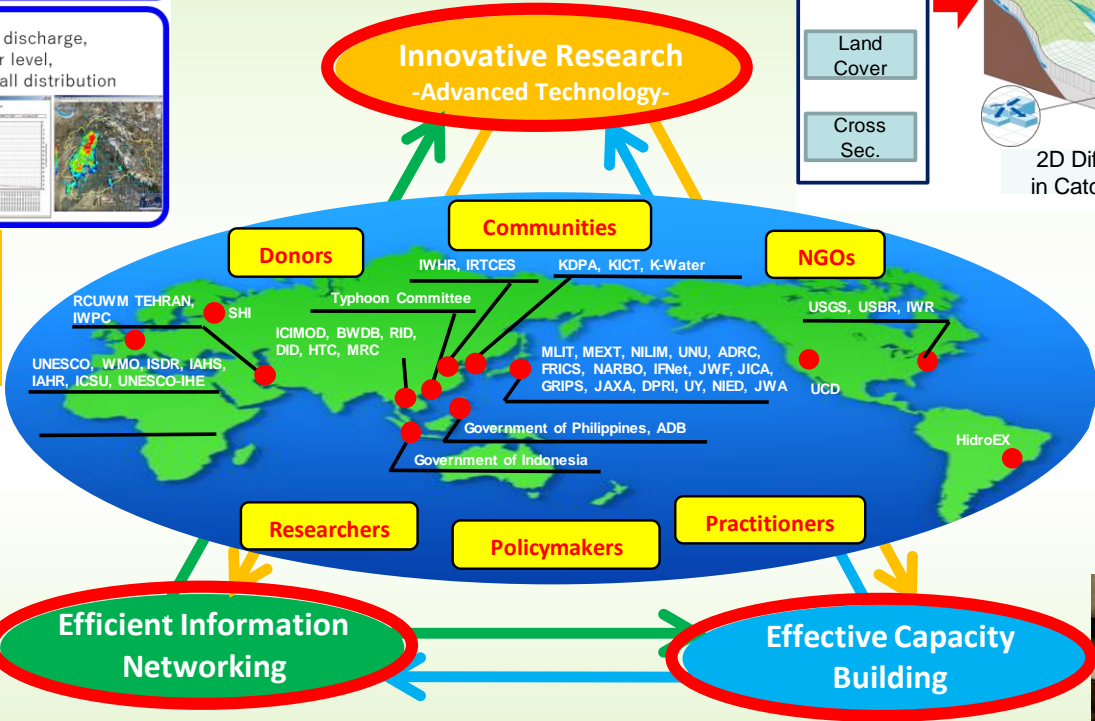


Hydro-meteorological models developed by ICHARM (IFAS and RRI)



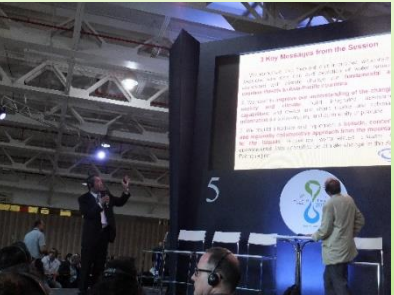
Integrated Flood Analysis System (IFAS)

Rainfall Runoff Inundation (RRI) model



- UNESCO-IHP
- International Flood Initiative (IFI)
- UN agencies
- Typhoon Committee
- Governments, NGOs, Academia etc.

- Short-term training
- Master Course
- Ph.D. Course
- Follow-up seminars
- Local training (IFAS, ADCP)



APWS3@Yangon

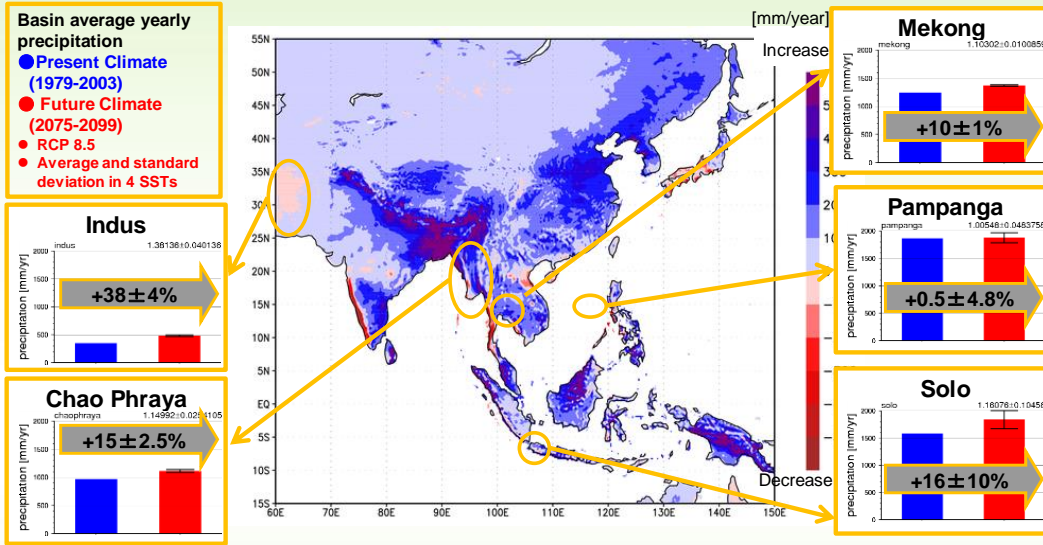
WWF8@Brasilia

Key products for climate and flood risk reduction

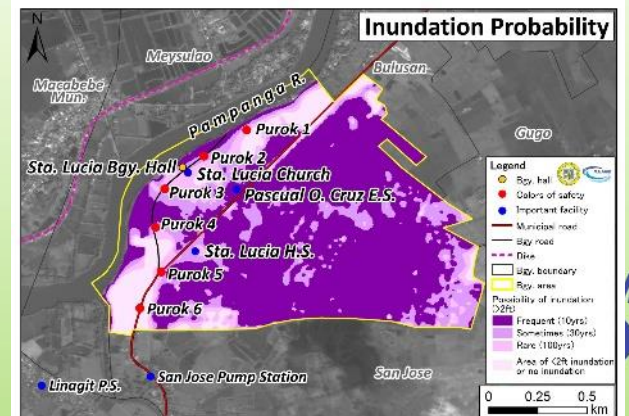
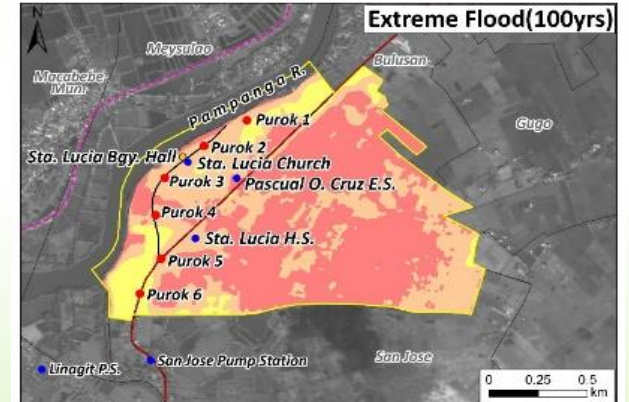
Program for Risk Information on Climate Change



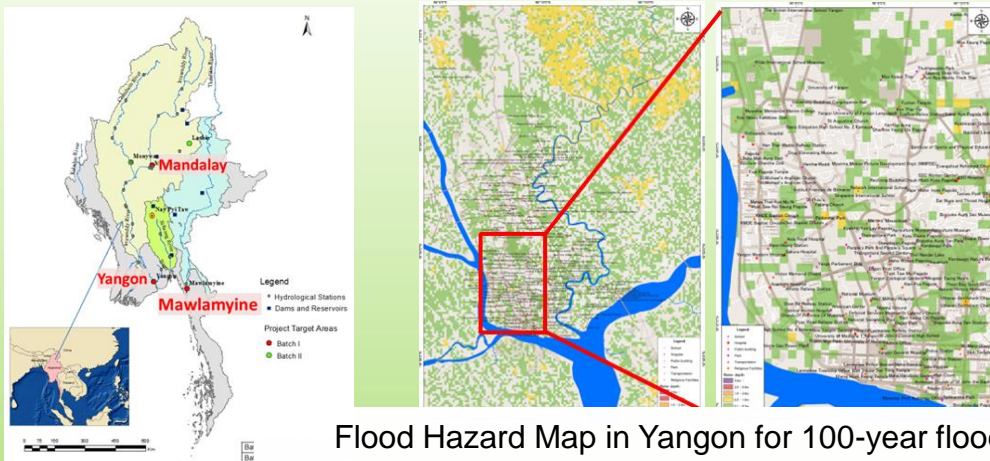
Comparison of 5 River Basins' Average Yearly Precipitation between Present Climate (1979-2003) and Future Climate (2075-2099)



Support for Community-level Flood Contingency Plans (Calumpit, Philippines)



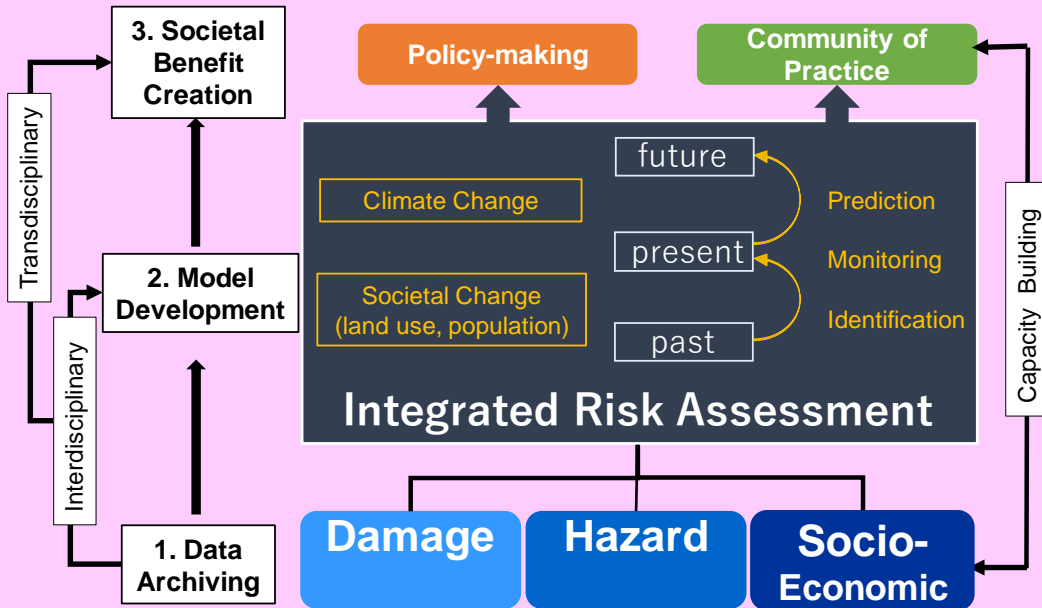
ADB Project for Myanmar Transformation of Urban Management



International Flood Initiative (IFI)

Establishment of Platforms on Water Resilience and Disasters

Platform on Water Resilience and Disasters



Sri Lanka



Myanmar



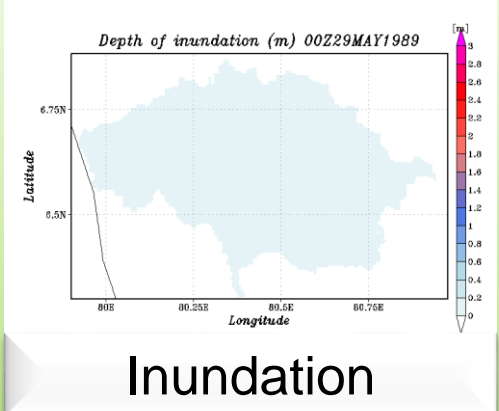
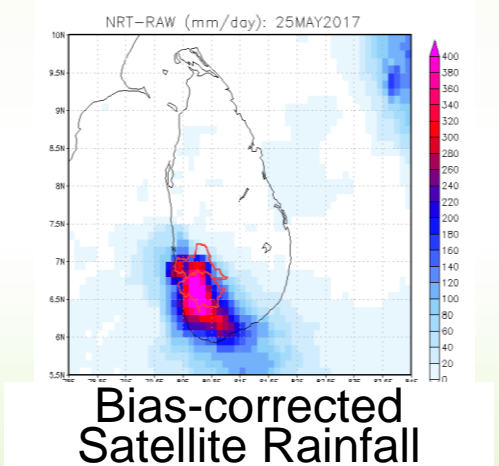
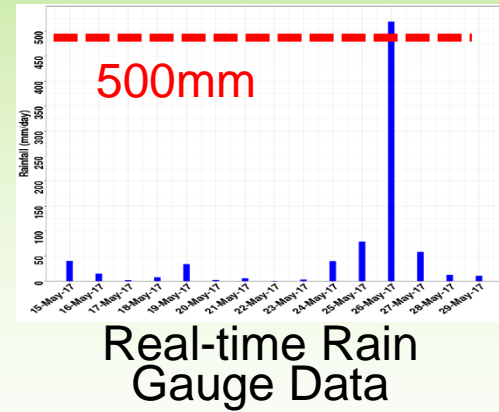
Pakistan



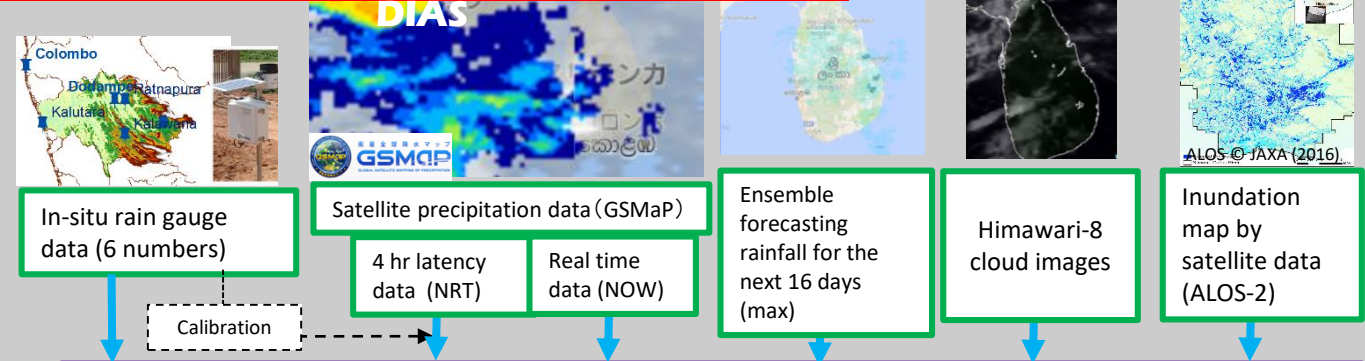
Philippines



DIAS-ICHARM: Flood Information Sharing Support in Sri Lanka

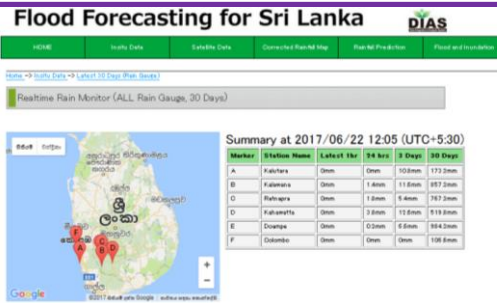


Implemented by EDITORIA and ICHARM on



Flood Forecasting for Sri Lanka

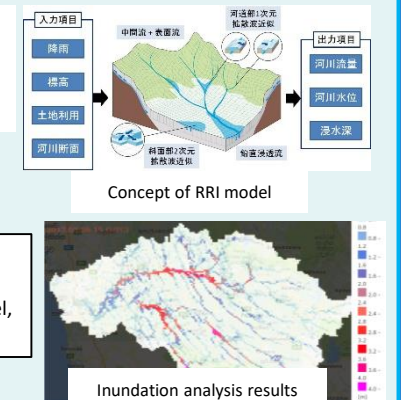
On-line Information provision on DIAS: In-situ rainfall, satellite rainfall, calibrated and forecast rainfall, inundation simulations



Inundation analysis by using RRI in DIAS

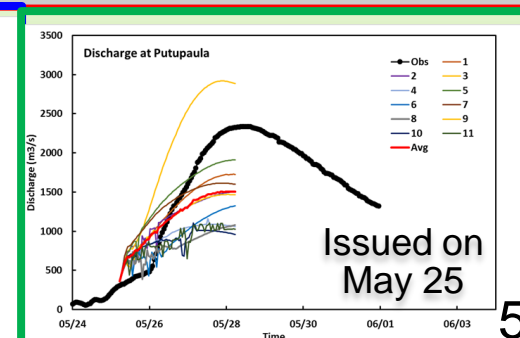
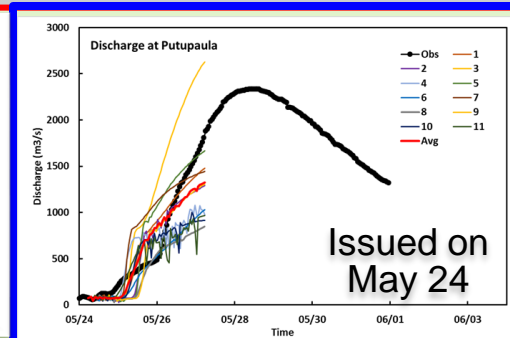
RRI model

Simulation and forecasting of river discharge, water level, inundation extent



Ensemble Flood Prediction

72hr
11 ensembles every 24hr



***Thank you very much
for your kind attentions***



URL: <http://www.icharm.pwri.go.jp/index.html>

E-mail: te-ikeda@pwri.go.jp

